



# COMMUNICATIONS

## Fall / Automne 2014

VOLUME 12 NUMBER 1 • OCTOBER/OCTOBRE 2014

### CRHA Communications Communications ACHF

A publication of the Canadian  
Railroad Historical Association  
Une publication de l'Association  
canadienne d'histoire ferroviaire

110, rue Saint-Pierre  
Saint-Constant (QC)  
Canada J5A 1G7

Tel: 450-638-1522

Fax: 450-638-1563

Museum e-mail/courriel du Musée:

[mfcd@exporail.org](mailto:mfcd@exporail.org)

Web site/site Web:

[www.exporail.org](http://www.exporail.org)

Secretary/secrétaire: [crhasec@aei.ca](mailto:crhasec@aei.ca)

ISSN 1493-6089

CHRA Communications is included in  
your CRHA membership.

Communications ACHF vous est  
envoyée comme membre de l'ACHF

Editor: *Stephen Wray*  
Rédacteur [cpr2850@yahoo.com](mailto:cpr2850@yahoo.com)  
en chef: [@cpr2850](https://twitter.com/cpr2850)

Layout: *Gary McMinn*  
Mise en page:

Translation: *Luc Hamilton*  
Traduction: *Gilles Lazure*

Contributors: *Peter Murphy*  
Collaborateurs: *Marie-Claude Reid*  
*Stephen Cheasley*  
*Ken Goslett*  
*Bill Walker*  
*Bruno Cordellier*  
*Arthur Clowes*  
*Denis Fortier*  
*Andrew Panko*  
*Ian Smith*  
*Mike Westren*  
*Glen Migneault*

Membership processing/  
régisseur des membres:  
*Gérald Bouchard*

## Editor's Message

*Welcome one and all to the new "CRHA Communications". My name is Stephen Wray. I'm a long time CRHA member living in the Montreal suburb of Beaconsfield, QC. I've been asked to take on the editorship of CRHA Communications. The intentions are to publish electronically on a regular basis. Please feel free to submit any items of interest to CRHA members in "Word" format to [cpr2850@yahoo.com](mailto:cpr2850@yahoo.com) For short communication, consider twitter: [@cpr2850](https://twitter.com/cpr2850). Pictures are acceptable as well however due to email limitation on file size, larger photos likely will have to be sent one at a time or alternatively, feel free to use a service such as [dropbox.com](https://www.dropbox.com) and send along the link. Please send clear captions identified by picture number, for each photo.*

## Message de l'éditeur

*Bienvenue à tous à la nouvelle édition du bulletin d'information Communications ACHF. Je suis Stephen Wray, un membre de longue date habitant Beaconsfield, Québec, dans la banlieue montréalaise et on m'a demandé de devenir le rédacteur en chef de ce bulletin d'information. Notre intention est de le publier régulièrement sous forme électronique. N'hésitez pas à nous soumettre des articles d'intérêt pour les membres de l'ACHF, en format Word, à l'adresse de courriel [cpr2850@yahoo.com](mailto:cpr2850@yahoo.com) ou, pour de courts sujets, utilisez le compte Twitter : [@cpr2850](https://twitter.com/cpr2850). Les photographies sont également les bienvenues ; cependant, en raison des restrictions imposées sur la taille des fichiers individuellement ; sinon, utilisez un service de partage et de stockage tel que [Dropbox.com](https://www.dropbox.com) en nous faisant parvenir les liens. S'il vous plait, envoyez les légendes clairement identifiées par le numéro de chacune des photos.*

## Annual General Meeting (AGM)

The AGM of the CRHA was held at Exporail/The Canadian Railway Museum on Saturday, September 20th, 2014 at 10AM.

Full details of the meeting including the President's report will be posted to the Association's web site: [www.exporail.org/en/crha/publications/annual-reports](http://www.exporail.org/en/crha/publications/annual-reports)

The Financial Statements of the CRHA – March 31, 2014 have been posted to our web site at: [www.exporail.org/en/crha/publications/financial-statements](http://www.exporail.org/en/crha/publications/financial-statements)

## Assemblée générale annuelle des membres (AGA)

L'AGA de l'ACHF s'est tenue le samedi 20 septembre 2014, à 10 h, à Exporail, le musée ferroviaire canadien.

Tous les détails de la réunion, y compris le rapport du président, seront affichés sur le site Web de l'Association : <http://www.exporail.org/achf/publications/rapports-annuels/>.

Les états financiers de l'ACHF en date du 31 mars 2014 ont été publiés sur notre site Web à l'adresse : <http://www.exporail.org/achf/publications/etats-financiers/>.

## Canadian Rail

In fiscal 2013 we produced 272 pages (278 pages in 2012) of quality articles on a variety of subjects representing Canadian railway history from coast to coast. This would not have been possible without our dedicated team of Douglas N. W. Smith and Peter Murphy, our Co-Editors; and Stan Smaill, Ronald Ritchie, John Godfrey, Ken Goslett, Lorne Perry, David Gawley, Denis Vallières, Michel Lortie, Jean-Maurice Boissard, Gilles Lazure, Jacques Loïselle as well as numerous contributors of content material. We would also like to recognize Ms. Josée Vallerand, CRHA Archivist. Over 1300 volunteer hours were spent producing Canadian Rail.

## Canadian Rail

Au cours de l'exercice 2013, nous avons réalisé 272 pages (278 pages en 2012) d'articles de qualité sur une variété de sujets traitant de l'histoire des chemins de fer du Canada, d'un océan à l'autre. Cela n'aurait pas été possible sans notre équipe composée de Douglas N. W. Smith et Peter Murphy, nos corédacteurs en chef, et Stan Smaill, Ronald Ritchie, John Godfrey, Ken Goslett, Lorne Perry, David Gawley, Denis Vallières, Michel Lortie, Jean-Maurice Boissard, Gilles Lazure, Jacques Loïselle, ainsi que de nombreux contributeurs au contenu. Nous tenons également à remercier Mme Josée Vallerand, l'archiviste de l'ACHF. Plus de 1 300 heures ont été



Of note is that these are deadline hours, six times a year! We are very pleased with the progress we have made to get and keep Canadian Rail on time. We are also continuing to make progress on increasing the French content to better appeal to our Francophone members.

Present bi-monthly circulation is approximately 1125 copies. We have continued our program of promoting Canadian Rail sales through hobby shops and other outlets and are now selling an average of 210 copies per issue through outlets, giving the CRHA wider visibility.

consacrées à la production de la revue Canadian Rail. Il est à noter que ces heures sont des heures de tombée qui surviennent six fois l'an. Nous sommes très heureux des progrès que nous avons fait pour respecter et maintenir les délais de publication de Canadian Rail. Nous continuons également à faire des progrès quant à l'augmentation du contenu en français pour mieux captiver nos membres francophones.

Notre circulation bimestrielle actuelle est d'environ 1125 exemplaires. Nous avons poursuivi notre programme de promotion des ventes de Canadian Rail par le biais des boutiques de passe-temps et d'autres points de vente et nous vendons en moyenne 210 exemplaires par numéro via ces intermédiaires, ce qui donne une plus grande visibilité pour l'ACHF.

## Exporail – Family Day

Exporail conducted its annual "Volunteer Family Afternoon" on Saturday, September 20th. The weather was conducive to outdoor events and the site was a beehive of activity.

The star of the day was the recently donated (by CN) SW1200RSm number 1382 (former 7300/CN Class GR-12Y), built by General Motors Diesel, London, ON., in 1960. Developing 1,200 horsepower, this flexible and efficient yard locomotive is typical of the equipment used by CN on non-main lines throughout Canada. Rebuilt in 1987 at the Point St. Charles shops, it was retired from service then completely overhauled and presented in working order.

## Journée familiale des bénévoles à Exporail

Exporail a tenu sa journée familiale annuelle des bénévoles le samedi 20 septembre. Le temps était propice aux activités extérieures et le site a fourmillé de visiteurs.

La reine de la journée fut la locomotive SW1200RS, classe GR-12y, numéro 1382, un don récent du CN portant alors le no 7300 et qui a été construite par General Motors Diesel, à London, ON, en 1960. Développant 1 200 hp, cette locomotive de triage, flexible et efficace, est typique de l'équipement utilisé par le CN sur les lignes secondaires à travers le Canada. Reconstituée en 1987 aux ateliers de Pointe St-Charles, elle a été retirée du service et complètement révisée et remise en état de marche.



Shining and smelling of fresh paint, CN 1382, ex-7300, operated Exporail's shuttle service for the very first time on Saturday, September 20th. Note that the number boards have not been changed yet to match the unit's "new" number. The unit was fresh out of the paint shop that morning having received the as delivered olive/gold treatment. Ken Goslett

Brillante et sentant la peinture fraîche, la 1382 du CN, ex-7300, effectue le service de navette d'Exporeil pour la première fois en ce samedi 20 septembre. Notez que les affiches numériques n'ont pas encore été modifiées pour correspondre au nouveau numéro de l'unité. L'unité était fraîchement sortie de l'atelier de peinture, où elle avait reçu ses couleurs d'origine vert olive et or, le matin même. Ken Goslett

## Division News • Nouvelles des divisions DIVISION CHARNY



C'est avec un grand plaisir que je vous donne des nouvelles de la Division Charny de l'ACHF. La fin de semaine du 23 et 24 août dernier, j'ai représenté la Division Charny à la fête Festirail VI organisée par Revit Charny en coopération avec le Groupe TRAQ. <http://ici.radio-canada.ca/regions/quebec/2014/08/24/01-festirail-charny-trains-miniatures-collectionneur.shtml>. J'ai profité de cette tribune qui m'a été accordée pour remettre au public des dépliants pour aller visiter EXPORAIL à Saint-Constant et la plupart des personnes ont promis de s'y rendre.

qui a roulé dans le film de 1927 avec le comédien Buster Keaton dont je faisais tourner le DVD. Les gens ont pu apprécier toutes les prouesses de ce grand acteur et, en même temps, la performance de la « Général ».

Ce fut intéressant de discuter avec le public du fait que les premières locomotives dans les années 1860 fonctionnaient avec des bûches de bois. En effet, les compagnies de chemin de fer devaient, à leur début, négocier des contrats avec les cultivateurs, afin que ceux-ci leur fournissent des milliers de cordes de bois pour pouvoir faire fonctionner leurs locomotives.

« Parler trains » avec un public intéressé rend ces rendez-vous fort agréables!

Sur le site du groupe TRAQ, vous allez pouvoir trouver tous les bulletins de la Division Charny de l'ACHF! <http://groupe-raq.com/ACHF/ACHF.html>

Bonne lecture!

Denis Fortier, représentant  
Division Charny de l'ACHF

Un de mes amis de La Malbaie m'a prêté sa « General », la locomotive 4-4-0





It is with great pleasure that I am giving you news of the CRHA Charny Division. The weekend of last August 23 and 24, I represented the Charny Division at the Festirail VI festival organized by Charny Revit in cooperation with Le groupe TRAQ. See (in French): <http://ici.radio-canada.ca/regions/quebec/2014/08/24/001-festirail-charny-trains-miniatures-collectionneur.shtml>. I took this opportunity to distribute leaflets to the public and entice them to visit EXPORAIL, in Saint-Constant and most people promised to do so.

A friend of mine from La Malbaie lent me his "General", the 4-4-0 locomotive which rolled in the 1927 movie with Buster Keaton of which I was showing the DVD. People could appreciate all the exploits of this great actor and, at the same time, the performance of the "General".

It was interesting to talk to the public of the fact that the first locomotives in the 1860s operated with wooden logs. Indeed, the railway companies had, in their infancy, to negotiate contracts with farmers so that these provided them with thousands of wood piles to be able to run their locomotives.

Talking about trains with an interested audience makes these events very pleasant!

On Le groupe TRAQ Web site, you will be able to find all the CRHA Charny Division's bulletins (in French)! <http://groupe-traq.com/ACHF/ACHF.html>

Happy reading!

Denis Fortier, Representative – CHRA Charny Division



### ESQUIMALT & NANAIMO DIVISION

It has been a busy year once again for the Esquimalt and Nanaimo Division. The members have accomplished well over two thousand volunteer hours in their activities. Once again the main focus has been railway work on the Port Alberni Subdivision of the Esquimalt & Nanaimo Railway . This has helped in keeping this historic section of track from been lost to the aggressive west coast rain forest. This September the line hosted a speeder group visit from the North American Railcar Operators Association.

Division volunteers have also attended train shows and two 100th anniversary railway events - . supplying historic railway displays and offering speeder rides to the public at these celebrations.

The Division is currently rebuilding a Wisconsin engine that will be used in the restoration of their 1950's Fairmont B Weed Cutter.

Additionally they are also working with local community leaders and groups in hopes to establish a historical interpretive rail museum in the area of Coombs. They are very excited with this year's accomplishments and look forward to our Fall activities and a new year.

### KINGSTON DIVISION

The Kingston Division holds monthly meetings throughout the year. From September to the following June the meetings are held in a local school and consist of a railroad-related presentation followed by a brief business session. In the summer months when the school is closed train-watching 'meetings' are held at Napanee VIA station in July and at Belleville VIA station in August.



The successful Rail O Rama model train show, the Division's annual fund-raising activity, is held in March each year and celebrated its 25th anniversary in 2014. The show features a variety of layouts and exhibitors as well as vendors of model railroad equipment and memorabilia. The show is designed to attract families as well as railroad and modelling enthusiasts and includes both a Thomas layout for small children and two hands-on layouts to introduce older children to the joys of model railroading."

The Kingston Division July meeting was held at the Napanee VIA Station. Both the weather man and the trains cooperated nicely with warm temperatures, a sunny sky and a fair number of trains: both CN and VIA. The afternoon and evening of train watching was followed by a pleasant get together at Tim Horton's in downtown Napanee before heading for home. Those present from left to right were Malcolm and Mary Peakman with Mustafa, Doug Rickaby, Hughes Bonin, Bob Heintz, Ed Agarand, Hugh MacLean, Bill Higgins (seated) Fred Beeton, Frank Steele, Robin Lerpiniere and Brian Smith. Submitted by Doug Rickaby



## NEW BRUNSWICK DIVISION

As has been the case for several years, the New Brunswick Division accepted an offer from the "United Way of Moncton" for some help with on-going site maintenance under their "Day Of Caring" program. This year they had about a dozen volunteers that helped to remove the winter's accumulation of dust from the museum displays as well as painting some of our rolling stock. The Division really appreciates their help, so they also try to intertwine a bit of fun in with the tasks. This year there was a joint luncheon at the Steeves House Museum for volunteers from both organizations. As the afternoon drifted on and many of tasks were completed, some of the volunteers started asking questions about some of our artefacts. The easiest way to answer many of these is to provide a demonstration.

Other projects from the 2014 season include:

Clearing the right of way to allow travel from the Hillsborough yard out to the Gray's Island Crossing with a motor car. They still have some more R.O.W. work to widen the way before they can comfortably take the Hay-Wagon the full distance but it's coming along. Considerable work has been required to remove the undergrowth, some that has been attempting to fill in the R.O.W. for 30 years.

Advancement of the model train layouts in their Baggage Car. Thanks to Roland Gaudet and his associates from one of the Moncton Model Railway clubs they can offer a pair of model train layouts for kids of all ages.

A decision was to develop presentations starting with their more of unique rolling stock about their role on the railways. The Division felt it should move ahead from old fashion presentations to ones that use items from today's more technical world for younger folks. They were lucky in that first the S.E. Museum Zone circulated a summer student, Annie Lavoie-Rochon, providing her services to us for a week. Annie is specializing in video production at University. This assisted with pulling together short useable video productions about some of our equipment. Then ACTA passed along one of their students, Katie-Ann Dunfield, who has worked for the Division before and she was able in her few days with the Division to develop some animation, especially for our Improved Hart Car. Then they

relied on another University student who worked for them in the past, Luke Hopper. Luke helped with the development of suitable audio for the productions.

This year has also been good for donated artefacts. Ron Grant donated a couple of railway signs from Saint John. One identifies CPR Mill Street, and an older highway crossing signs with the flatter angle boards. Another was an early CNR trainman's lantern, with a red glass globe in it embossed with a G.T.R. This donation from Phyllis Steeves definitely raises some question about its history! Then Marion Chartley of Moncton donated a "CNR Express Safe" (Strong Box # 105) that her husband had used prior to September 1938 at the New Carlisle, QC station. The Lutz Mountain Heritage Foundation were looking for a new home for a pair of station benches that they had. While the Division hasn't tracked down their full history, it's known that this style of bench was common to stations of both national railways around New Brunswick. They suspect these benches are from either the one at Lutesville (6.5 miles from Moncton) or Berry Mills (8.0 miles from Moncton).

The Shogomoc Historical and Model Railway Club, of Bristol contacted the Division in early summer about an air operated diesel-electric locomotive bell that fell outside their collection policy, so they asked the Division if they would be interested. Turns out they were as they were looking for a bell that could set up as a mate to their electric operated bell.

A gentlemen from Moncton has recently donated a very interesting hand crafted train set. This set is made up of 8 individual pieces of rolling stock. Apparently this family had 3 similar sets and the NBRM now has one on display in its station.

Last but definitely not the least was the donation of a New Brunswick Railway Metal Baggage tag. This tag # 1725 and labelled "Local" indicates it was use for use just within the NBR so will make a great companion to go with the # 31 Baggage Tag of the Moncton and Buctouche Railway that they have in our collection. It is interesting to note that both of these tags were made in Boston, but by two different companies.



Three photos: above is a student & a bush hog, centre, our chief of maintenance & chain saw, and the right photo shows one of our mechanics making some final adjustments and giving some instructions on the Division's customized R.O.W. clearer – Totally unique!





July 11, 2014 – The first official public group to take a trip on the Division's Hay-Wagon. A group from a Moncton Day Care after a trip down the tracks.



## NIAGARA DIVISION

The Niagara Division had a very active summer season.

The Division once again hosted their our Longest Day outing. This has been an ongoing activity for 30 plus years and is held on the Friday closest to the longest day – this year June 20th. Members came out for breakfast at Bayview Junction followed by some local railfanning and then a tour of the steam museum in Puslinch, ON. The day lasted from pickup at 4:45 am in St. Catharines to drop off at 10:30 pm.

For those not familiar with the area, Bayview Junction, located in Hamilton, ON adjacent to the municipal boundary with Burlington, is a major railway junction (3 busy CN lines plus an adjacent CP one as well) with significant daily volume of freight and passenger trains.

The railway lines bisect the property of the Royal Botanical Gardens, providing a picturesque setting.

The Ontario Steam Heritage Museum is a private facility located in Puslinch township in Southern Ontario. The museum doesn't have a website, nor does it have regular opening hours, but it is open by appointment for private tours, clubs, and schools. More information is available at [http://woodgears.ca/steam\\_museum/](http://woodgears.ca/steam_museum/)



A group shot of some of the Niagara Division gang at their Longest Day outing on June 20th. This photo represents about 20 of the 30 or so Members that came out this year for a full day of activities.





In July the Division had its annual picnic, this year featuring their CN-green CRHA Niagara Division aprons and Division shirts. They had about 40 people out for the picnic with all food donated to the cause by members.

Also in July, a call was made on fellow Member Ron Pullano's HO scale home layout followed by visits to the Niagara Railway Museum and the 6218 Museum in Fort Erie followed by some railfanning in Welland.

In early August the Division did their Second annual GO Train trip. GO Trains only travel to Niagara in the summer, and thus far, only on weekends. This year Members took the train to Toronto Union Station then toured Roundhouse Park, a short walk from Union (with the CNR Northern 6213 and a GP-7 on display); visited Steam Whistle Brewery that is in one end of the CP roundhouse, then took the GO Train to Aurora, located on the Barrie line. A lunch stop was made at a watering-hole next to the old Aurora station then back home via Toronto ... all in 12 hours.



Fifteen Niagara Division Members took part in the GO Trip adventure to Toronto and beyond to Aurora, north of the city. This photos shows a few of the bright-eyed early arrivals in Niagara Falls station before the morning departure..

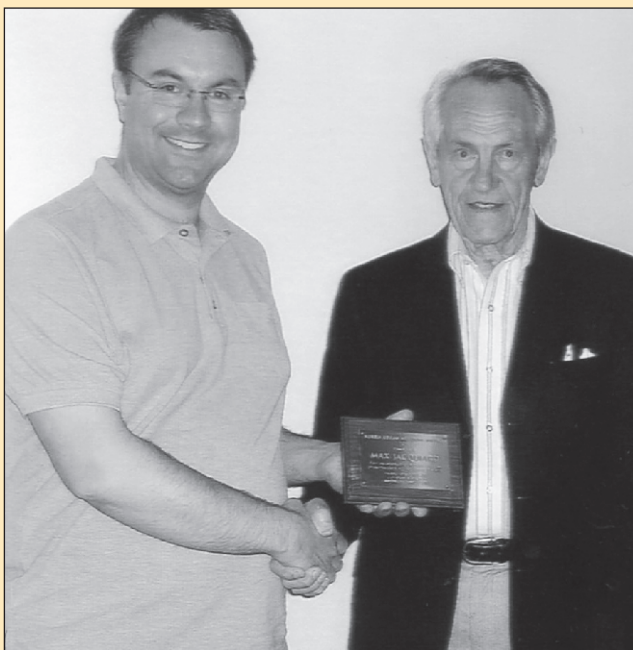
## PACIFIC COAST DIVISION

At the Annual General Meeting on April 17, Chris Wasney was elected President, after serving as Vice-President since 2005. Chris succeeds Doug Battrum, who had served as President for the previous 20 years consecutively. Including an earlier term as President from 1985 to 1989, Doug had held the position for a total of 24 years, more than half of the 44 years that Pacific Coast Division has been in existence. He remains a Director.

In his first duty as President, Chris presented the 2014 Norris Adams Memorial Award to Max Jacquiard, the master painter of more than 400 Canadian railway scenes from the steam era. Max is the 23rd recipient of the award, which honours a person who has made significant contributions to the preservation of British Columbia's railway history.

Major articles in recent issues of The Sandhouse, the division's quarterly journal, include a 32-page history of the Royal Hudson excursion train (published in two parts in the Spring and Summer issues) and a 17-page article on the first 10 years of CN operation of the former BC Rail system, in the Summer issue.

Two special events were held at Heritage Square in Coquitlam, where the Division maintains and operates Fraser Mills station museum, which includes an ex-CP Rail



Newly elected Pacific Coast Division President Chris Wasney (left) presents the 2014 Norris Adams Memorial Award to railway artist Max Jacquiard.

caboose. Members opened these facilities for a Festival du Bois event on March 2 and a St. Jean Baptiste Day event on June 24.

Division members continue to meet monthly, except in the summer. Next meetings will be on September 16, October 15 and November 20, at 7.15 p.m. at Heritage Square.



## TORONTO & YORK DIVISION

The Division held its AGM on Feb 13th, 2014. The minutes of the previous AGM were read and approved followed by various reports. The nominating committee advised that the following Division members were standing for re-election: Gord Billingham, Paul Bowles, Hollie Lowry, Tony Rubin, Dave Turner, Douglas Wannamaker and Juris Zvidris. There being no further nominations, the Executive was elected by acclamation.

The Division held an excursion on July 19, 2014 to the Halton County Radial Railway to participate in their 60th anniversary celebrations. The HCRR is a transit museum, and is located at Rockwood, Ontario just east of Guelph and was founded in 1954.



The first photo shows TTC PCC #4000 alongside TTC Peter Witt car #2424.



The second photo shows some of the crowd in attendance at the station enjoying some birthday cake being served at the entrance to the station to mark this special occasion.

## CALGARY & SOUTH-WESTERN DIVISION

Calgary & South-Western Division of the CRHA lost a stalwart, vice-president and most of all friend with the death on July 4, 2014 of David Walter Edgar, following a four year battle with idiopathic pulmonary fibrosis, IPF stoically fought. A member for some 30 years, he really become deeply involved at the start of the C&S-W Signals Project, when two early US&S colour-lights were acquired and restored: these remain in service to this day at the private Champion Park south of Calgary along with a number of other representative signals. On what had to be the coldest day of January 1988, Walter, and particularly his camper van providing hot tea and warmth, participated in the retrieval of the Conrad Flagstop, which also forms part of the Champion Park collection. Whatever the Division has done since, the Cranbrook Capers which revolved round weekends at The Canadian Museum of Rail Travel, railfan photography trips, exploring old rail lines and routes in Saskatchewan, Alberta and BC, participating with early Selkirk Division activities in Revelstoke, to dragging the C&S-W into the computer age, Walter would be right there. He was a regular presence promoting CRHA and the Division at train shows, in particular Calgary's SuperTrain until this year when sadly the IPF forced him to miss the show. For a decade, he filled the position of CRHA Western Division Liaison, becoming well known to the groups in this end of our country. Calling out members to the Division's meetings, usually preceded by a group restaurant meal, Walter could be relied on to see things happened.

This love of and interest in trains and all things railway stemmed from his grandfather and became a lifelong passion. And so on July 9, 2014, we were called to the Celebration of Life for Walter, leaving with his chosen admonition from Ted Geisel (Dr. Seuss) "Don't cry because it's over, smile because it happened." Bon voyage, dear friend, wherever this next phase takes you. For and on behalf of the Calgary & South-Western Division of CRHA, Mike Westren



Calgary & South-Western Members (left to right) Don Thomas, Selwyn Morris, unknown, BJ Ersson and the late Walter Edgar take a break from their signal display work in June 2012, Walter was already suffering as witnessed by the oxygen tubes. Mike Westren



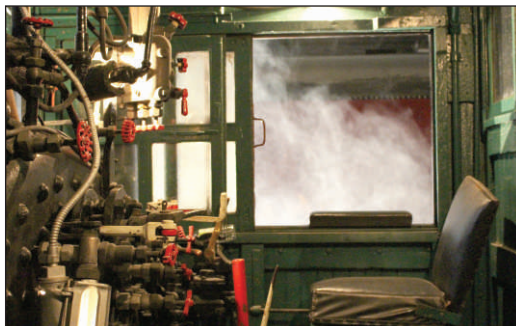


## Division contact information

Why not join one of our many Divisions across Canada?

Division Charny:	Denis Fortier, 418-665-4284 <a href="mailto:capaigle@netrover.com">capaigle@netrover.com</a>
Kingston Division:	Graham Oberst, 613-542-9461 <a href="mailto:graham.oberst@bell.net">graham.oberst@bell.net</a>
New Brunswick Division:	Ron Grant, 506-633-5967 <a href="mailto:cn17_23@yahoo.com">cn17_23@yahoo.com</a>
Toronto & York Division:	Anthony Rubin, 416-783-9654 <a href="mailto:tonyrubin@rogers.com">tonyrubin@rogers.com</a>
Niagara Division:	Andy Panko, 905-262-5014 <a href="mailto:apanko@niagara.com">apanko@niagara.com</a>
Calgary & South-Western Division:	BJ Errson, 403-652-7279 <a href="mailto:bcerrson@xplornet.com">bcerrson@xplornet.com</a>
Pacific Coast Division:	Ian Smith, 604-380-2424 <a href="mailto:railsmith@yahoo.ca">railsmith@yahoo.ca</a>
Esquimalt & Nanaimo Division:	Bill Walker, 866-468-7186 <a href="mailto:mccamp@shaw.ca">mccamp@shaw.ca</a>

## Illuminated Trains event / Exporail Trains en lumière



On October 4, Exporail held its 'Illuminated Trains' event, here are two photos of the CPR 4-4-0 144 taken by Bruno Cordellier.

Le 4 octobre, ce fut l'événement Trains en lumière à Exporail ; voici deux photographies de la 144 4-4-0 du CPR prises par Cordellier.

## Membership

Membership currently stands at 875 members. This is up from 852 the previous year. We are always in need of new members so please make it your personal goal to introduce at least one new person to the Association this year.

## Membership

Le nombre de membres est actuellement de 875, soit une augmentation par rapport aux 852 de l'an dernier. Nous sommes toujours à la recherche de nouveaux membres alors, s'il vous plaît, fixez-vous l'objectif personnel de proposer au moins une nouvelle personne à l'association au cours de cette année.



The CRHA exhibited at two recent train shows, both were on the weekend of October 4 - 5, 2014. Photo 1 - Daniel Laurendeau, Heather Haig and Michel Belhumeur man our booth at the North Shore Train Show, Robert Fortin also assisted. Photo 2- Peter Murphy and Ted Wickson man the booth at the Brampton Train Show in Ontario. Thanks to everyone who helped with the shows, some 14 new members were signed up!

L'ACHF a participé à deux récentes foires de trains, toutes deux tenues les 4 et 5 octobre 2014. Photo 1 : Daniel Laurendeau, Heather Haig et Michel Belhumeur ont tenu son kiosque au Salon du train Rive Nord, à Laval (Robert Fortin a aussi participé). Photo 2 : Peter Murphy et Ted Wickson ont été les préposés à son kiosque au Brampton Train Show, en Ontario. Merci à tous ceux et celles qui ont donné un coup de main à ces foires : quelques 14 nouveaux membres se sont engagés.

